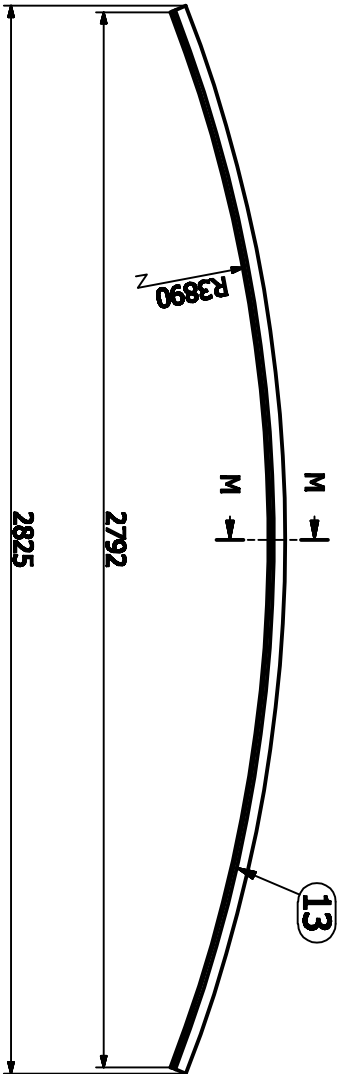
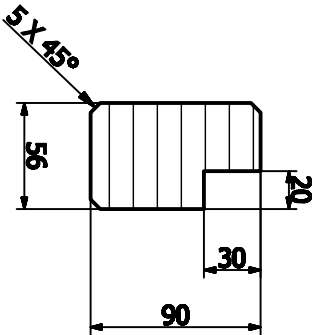
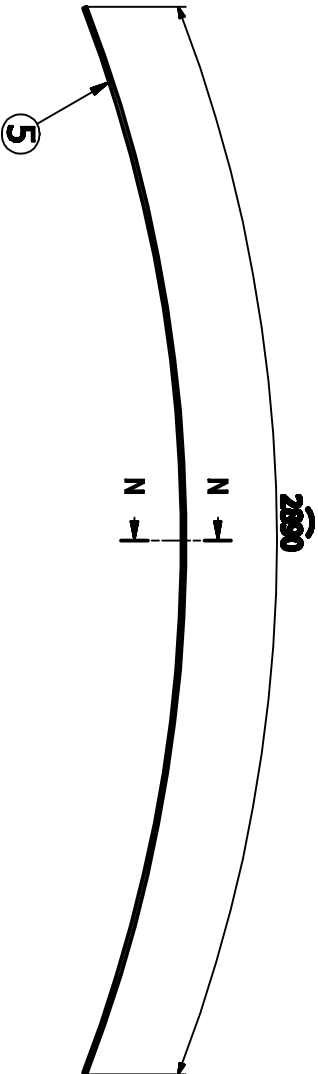
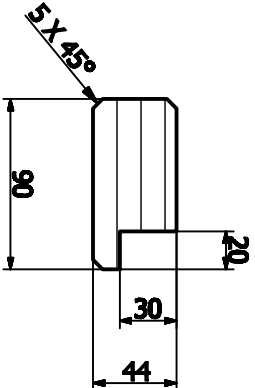


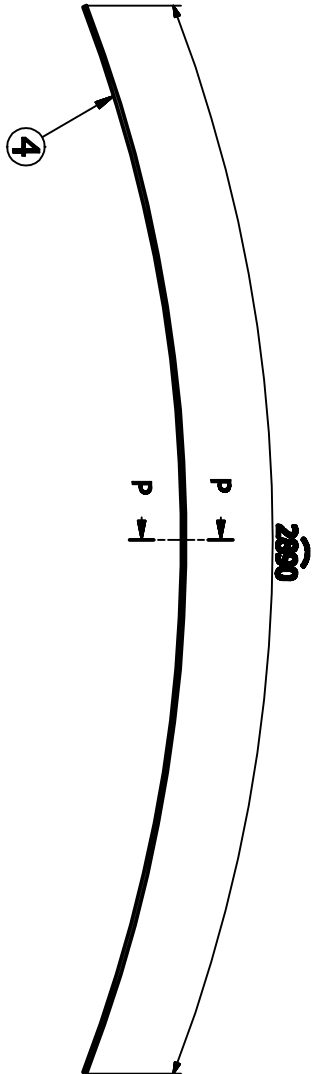
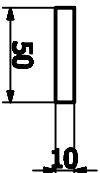
L-L (1 : 4)



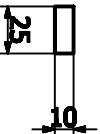
M-M (1 : 4)



N-N (1 : 4)



P-P (1 : 4)



<div>FIRMA BUDOWLANA MAZAN MAREK ZDROJEWSKI</div> <div>14-200 Żarnów ul. Dąbrowskiego 6a tel. (089) 648-77-74 kom. 0502-638-025 e-mail: mazanprojekt@o2.pl</div>	SZCZEGÓŁY	1 : 20
	Włata rowerowo - rekreacyjna Falknowo gm. Susz dz. nr 14/15 - Gmina Susz	12.11.2013
10 ARCHIT.		